





ATOS steel refers to all steel products used for automotive structures.

These are high strength steels of greater than 500MPa tensile strength and greater than 300MPa yield strength. High strength is obtained by adding alloying elements or cooling to low temperature. Steel products having tensile strength of more than 780MPa can be manufactured.

POSCO produces ATOS540 to ATOS780 steels in compliance with the ATOS (AuTOMobile Structural Steel) specification.



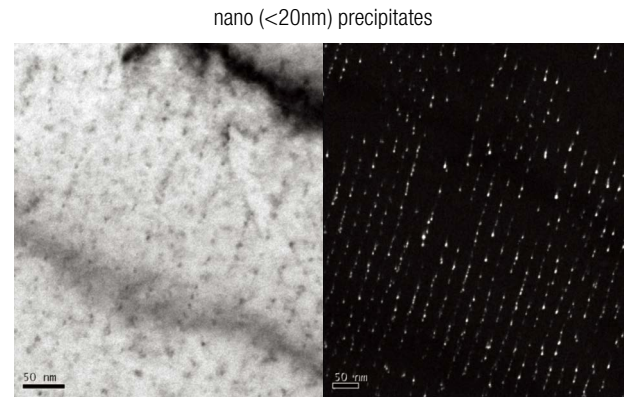
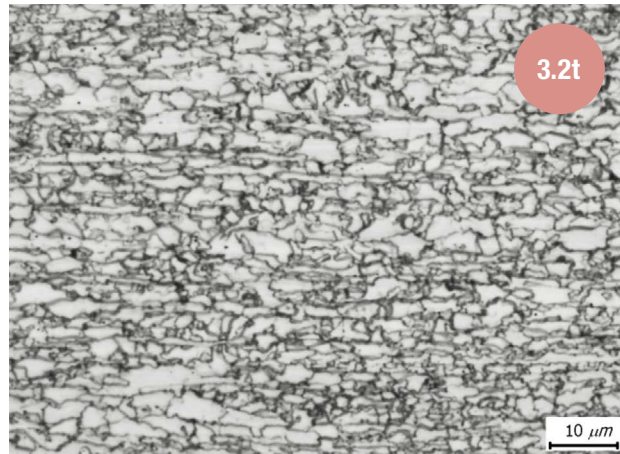
## Contents

Automobile Structural Steel	04
Available Dimensions	05
ATOS780	06

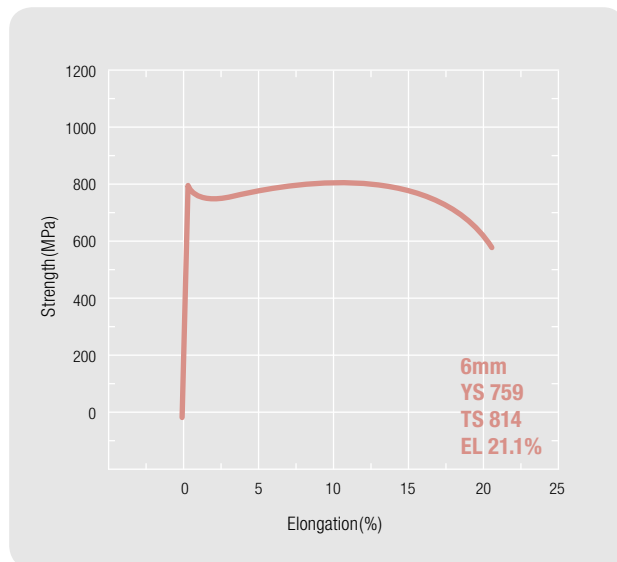


# ATOS780

## Ferritic Microstructure + Nano Precipitates



## Stress-Strain Curve



h




# ATOS

Copyright © 2022 by POSCO  
All rights reserved

## Contact Us

POSCO Headquarters  
Global Quality & Service Management Office  
6261, Donghaean-ro, Nam-gu, Pohang-si,  
Gyeongsangbuk-do, 38759 Republic of Korea  
TEL 82-54-220-0114



#### **Headquarters**

6261, Donghaean-ro, Nam-gu, Pohang-si,  
Gyeongsangbuk-do, 38759 Republic of Korea

**TEL** 82-54-220-0114

**FAX** 82-54-220-6000

#### **Seoul Office**

POSCO Center, 440, Teheran-ro,  
Gangnam-gu, Seoul, 06194 Republic of Korea

**TEL** 82-2-3457-0114

**FAX** 82-2-3457-6000

#### **Pohang Works**

6262, Donghaean-ro, Nam-gu, Pohang-si,  
Gyeongsangbuk-do, 37877 Republic of Korea

**TEL** 82-54-220-0114

**FAX** 82-54-220-6000

#### **Gwangyang Works**

20-26, Pokposarang-gil, Gwangyang-si,  
Jeollanam-do, 57807 Republic of Korea

**TEL** 82-61-790-0114

**FAX** 82-61-790-7000



[www.posco.com](http://www.posco.com)

[www.steel-n.com](http://www.steel-n.com)