

Deformed Bar in Coil

Availability

High quality

Automation

Zero Loss

Improvement

posco

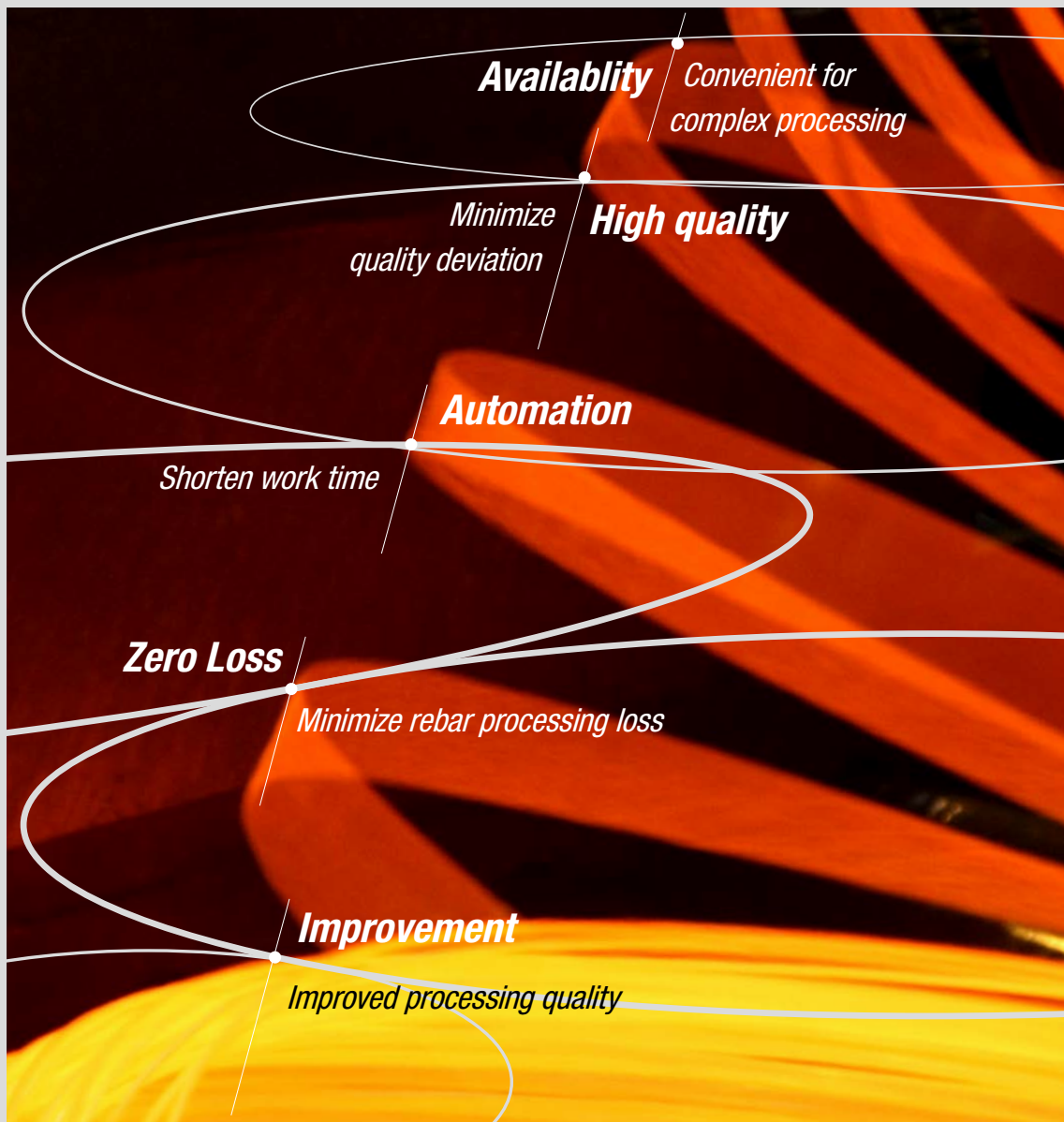
POSCO Deformed Bar in Coil

What is POSCO Deformed Bar in Coil?

This product is made of deformed reinforcing bars wound into a round coil shape. Also can be used by cutting and processing to the required length, which can innovatively reduce waste generated during the manufacturing process.



Product Characteristics and Effects



Product Spec.

Coil Spec.

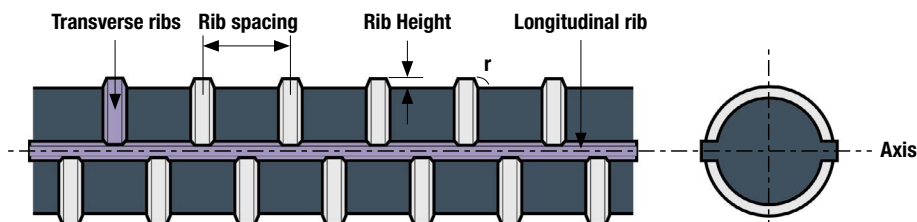


Specification	Size
Height	1400~1600mm
External diameter	1100~1400mm
Internal diameter	800~1000mm
Weight	1800~2100kg

Manufacturable Dimension

Diameter	Unit weight (kg/m)	Nominal diameter (mm)	Cross sectional area (mm ²)	periphery (mm)	Maximum average spacing of transverse ribs (mm)	Average height of transverse ribs		Maximum value of the sum of the gaps in the transverse ribs (mm)	Angle between the transverse rib and the axis Transverse ribs(r)
						Min (mm)	Max (mm)		
D10	0.560	9.53	71.33	29.9	6.7	0.4	0.8	7.5	45° more
D13	0.995	12.7	126.7	39.9	8.9	0.5	1.0	10	

Rib Shape



Quality Guarantee

Mechanical Properties

Standard	Yield strength (MPa)	Tensile strength (MPa)	YR (%)	Elongation (%)	Bendability	
					Bending angle	Inner radius
KS-SD400	400~520	More than 1.15 times the yield strength	87 Below	16 more	180°	Twice the nominal diameter
KS-SD500	500~650	More than 1.08 times the yield strength	92 Below	12 more	135°	

Tag Specifications and Roll Marks

Tag Specifications

A resin-based label is attached to improve the clarity of the written text and recognition after pickling. Laser marking of steel tags is being carried out in preparation for loss of label text during heat treatment.



Rebar Roll Mark (ex : SD500 / D13)



Processing Guide

① Product & Accumulation

- The shape is supported by 4 binding bands.
- Check the colored end caps at the end of the rebar
- Product number, unit weight and specifications are displayed on the tag



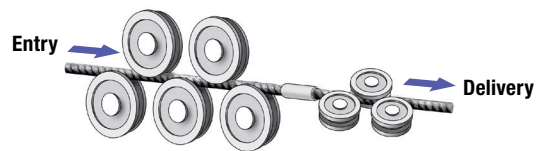
② Pay-Off settle down

- Pay-Off Height expansion required (for Wild Type)
- Tag sits on the equipment upwards
- Be careful of safety due to elasticity when dismantling the binding band
- Processed by unwinding from the top to the bottom



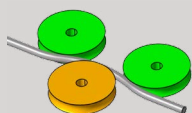
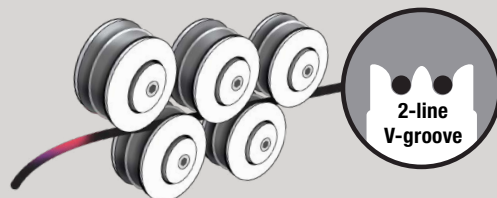
③ Straightening, bending process

- Increase reduction by reducing the entrance roll diameter
- Adjusted to straighten and prevent twisting by engaging the output roll

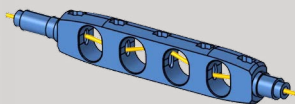


Optimal Conditions When Using Schnell Equipment

- Application of 2-line V-groove straightener roll
- Application of 2-line V-groove bending roll
- Beneficial for correction when installing guide rollers and swivel equipment at the entrance of the coil machine.



Entrance Guide Roller



Swivel Equipment



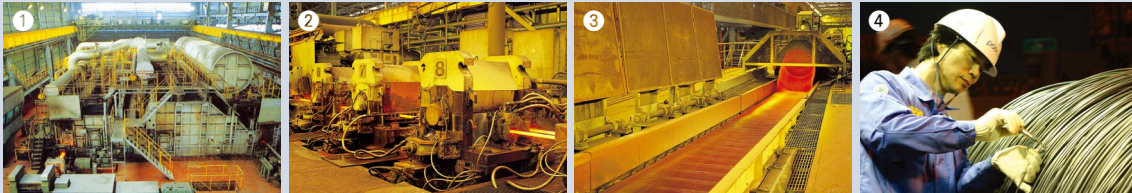
Straightener Roll



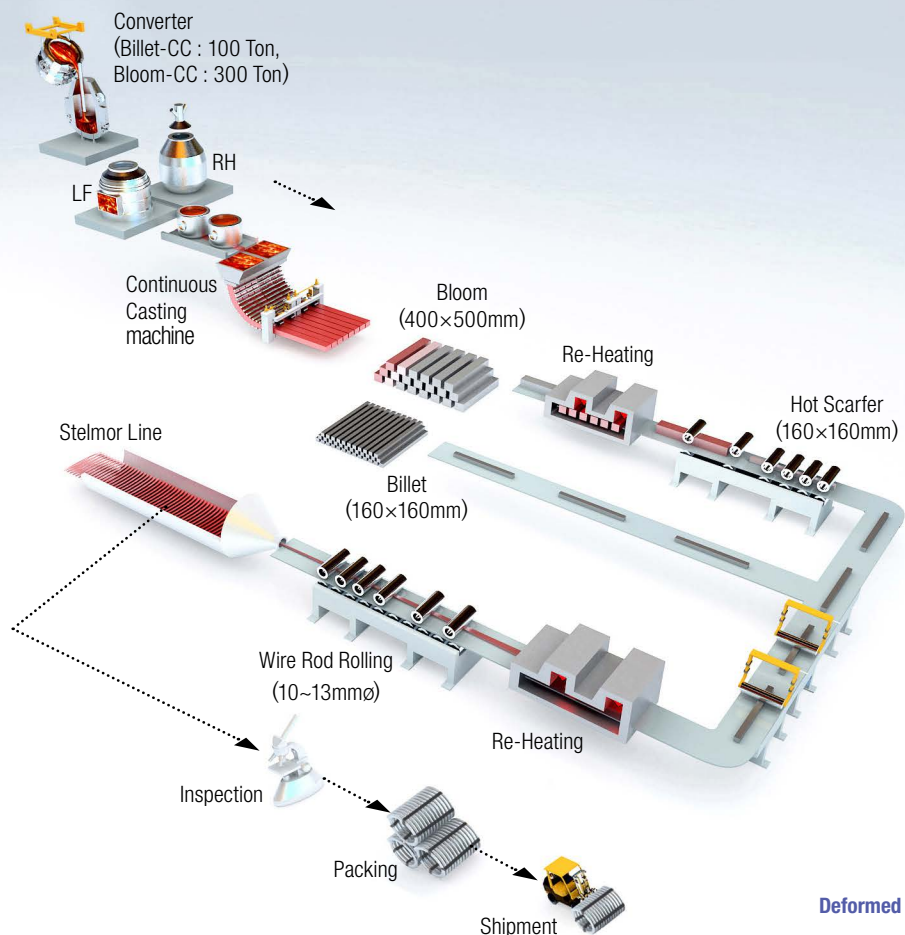
Bending Roll

Manufacturing Process & Equipment

POSCO produces products with the latest equipment and technology to ensure product quality meets customer needs. In addition, the entire process is controlled by a computer and is equipped with fully automated facilities that can improve precision and quality characteristics.



- ① Heating** Adjust the temperature and reheat time in the furnace depending on the product's purpose. To ensure uniform rolling performance and structure control of the billet, sufficiently preheat the billet at low temperature and manage the rolling fuel and air ratio in the heating furnace.
- ② Rolling** Material characteristics are secured by adjusting the rolling temperature, reduction amount and rolling speed of the product.
- ③ Cooling** To secure the characteristics of each steel type suitable for product use, the cooling rate is adjusted based on the winding temperature at the laying head, the blower volume and progress speed of the cooling table, and the conditions of the thermal insulation cover.
- ④ Test** We take specimens from products and conduct dimensional, surface and material tests. In addition, we pack and attach tags and manage shipment according to customer requests.



Deformed Bar in Coil

The POSCO Quality

Realization of symbiotic values through the establishment of a robust industrial ecosystem with suppliers, partners, and customers

- Development of quality and top-notch products that can impress our customers
- Creating customer value by securing cost competitiveness with suppliers and partners
- Robust facility implementation and smart facility management that can be called the cornerstone of production and quality

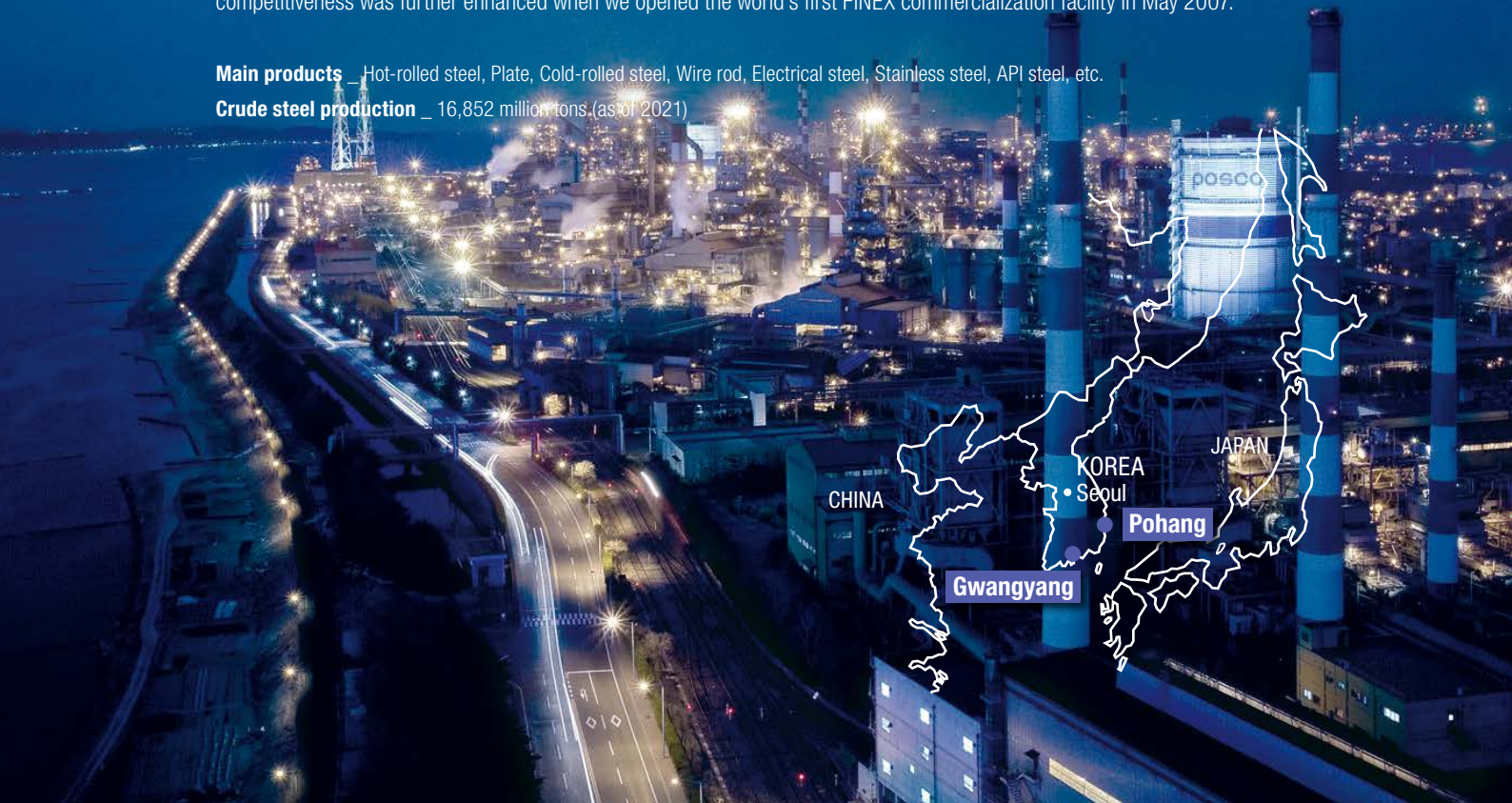


Upon completion of its first-phase manufacturing facility in 1973, Pohang Steelworks, Korea's first integrated steel mill, was finally completed after 4 stages of construction at Young-il Bay in February 1981.

POSCO is capable of producing and processing a variety of carbon steels and stainless steels. The company's global competitiveness was further enhanced when we opened the world's first FINEX commercialization facility in May 2007.

Main products _ Hot-rolled steel, Plate, Cold-rolled steel, Wire rod, Electrical steel, Stainless steel, API steel, etc.

Crude steel production _ 16,852 million tons.(as of 2021)



Headquarters

6261, Donghaean-ro, Nam-gu, Pohang-si,
Gyeongsangbuk-do, 38759 Republic of Korea

TEL 82-54-220-0114

FAX 82-54-220-6000

Seoul Office

POSCO Center, 440, Teheran-ro,
Gangnam-gu, Seoul, 06194 Republic of Korea

TEL 82-2-3457-0114

FAX 82-2-3457-6000

Pohang Works

6262, Donghaean-ro, Nam-gu, Pohang-si,
Gyeongsangbuk-do, 37877 Republic of Korea

TEL 82-54-220-0114

FAX 82-54-220-6000

Gwangyang Works

20-26, Pokposarang-gil, Gwangyang-si,
Jeollanam-do, 57807 Republic of Korea

TEL 82-61-790-0114

FAX 82-61-790-7000



www.posco.com

www.steel-n.com